



Alaska Student Loan Corporation

Alaska Commission on Postsecondary Education & Alaska Student Loan Corporation

UPDATE

The Alaska Commission on Postsecondary Education (ACPE) - funded by the Alaska Student Loan Corporation (ASLC) - promotes access to and success in education and career training beyond high school.

COLLEGE & CAREER PLANNING • FINANCIAL AID • CONSUMER PROTECTION
Promoting Higher Education & Training for Alaska



TRIBAL COLLEGE? 3

Alaska Pacific University considers a change



A VISION FOR SITKA 4

Outer Coast Project update



POLICY CORNER 6

Highlights from around the nation

COMMISSION & CORPORATION ROUNDUPS 7

Institutional Authorization and other action items

THE NETWORK 8

What, why, and future goals

WELCOMING NEW MEMBERS 10

Get to know newest ACPE staff



Photo by Malia Sieve, Lumina Foundation.

From left to right: Cathy LeCompte, Network Board Member and Director, AVTEC; Joe Nelson, Network Past President and Vice Chancellor of Enrollment Management and Student Affairs, UAS; and Heather Haugland, Project Coordinator, McDowell Group, LLC. enjoy a lunch break at the Southeast Region Workforce & Training Development Conference hosted by the Network.

Page 2

A MESSAGE FROM THE EXECUTIVE DIRECTOR

Lean culture and strategic planning



BACK TO
MAIN PAGE

A MESSAGE FROM THE EXECUTIVE DIRECTOR/OFFICER

Strategic planning has been a major focus at ACPE over the last quarter. Our strategic planning follows the ACPE Clarity Map, developed to guide all our planning activities. At the far left is our vision statement, an aspirational message, rather than a goal that one day we will check off as having been achieved. In the center are our mission – what we do, and our values – how we approach our work. To the far right are the outcomes – what we plan to achieve on behalf of our customers and stakeholders. This clarity map is our true

north, ensuring that all our work is mission-driven and providing us with an overarching structure for success.

Guided by that clarity map, two additional project groups have been meeting to put strategic plans into practice. One is conducting a thorough review of the institutional authorization processes and practices, with the goal of identifying opportunities for efficiency, and eventually revising those processes and practices to be more effective, more up-to-date, and easier for regulated schools to manage. The

other is examining loan programs and markets, to identify customer groups in need of education loans but who are not currently being served by Alaska programs, and to explore opportunities to make programs more accessible for those groups while maintaining loan portfolio health.

We expect these projects to result in a need for regulatory changes, so another busy quarter is ahead of us. More importantly, we expect these projects to result in a more efficient ACPE and enhanced programs and services for our customers. We look forward to telling you more over the coming months. In the interim, don't hesitate to contact us if you have any questions.

As we settle into fall, here's wishing all our students a wonderful new school year, and many thanks to all of you who serve and advocate for our state's students.

Best regards,
Stephanie
Stephanie Butler

Executive Director,
Alaska Commission on
Postsecondary Education

Executive Officer,
Alaska Student Loan Corporation

ACPE Clarity Map

| Aspirations | | Outcomes |
|-------------------------------------------------------------------------------------------------------------------------------------------------------------------------------------------------------------------------------------------------------------------------------------------------------------------------------------------------------------------------------------------------------------------------------------------------------------------------------------------------------------------------------------------------------------------------------------------------------------------------------------------|----------------------------------------------------------------------------------------------------------------------------------------------------------------------------------------------------------------------------------------------------------------------------|----------------------------------------------------------------------------------------------------------------------------------------------------------------------------------------------------------------------------------------------------------------------------------------------------------------------------------------------------------------------------------------------------------------|
| <p>Vision</p> <p>The Alaska Commission on Postsecondary Education delivers programs and services that inspire and enable every Alaskan to dream, plan for and achieve career training and/or college credentials. Collectively Alaskans' individual successes make their communities and economies strong and vibrant. ACPE is an exemplar of government efficiency and effectiveness by providing value-added products and services at the lowest possible cost to students and to the state. We are the state's higher education access and success resource and are relied upon and highly respected by Alaskans statewide.</p> | <p>Mission</p> <p>ACPE promotes access to and success in education and career training beyond high school.</p> <ul style="list-style-type: none"> Financial Aid Education Planning Consumer Protection Education Research | <p>Positively Impacting Alaska's Education Culture</p> <ul style="list-style-type: none"> Data-Driven Highly Engaged Employees Strong Statewide Partnerships Efficient and Financially Sustainable Meeting Alaska's Higher Education Planning Needs Effectively and Efficiently Deploying Alaska's Higher Education Financial Aid Resources |
| | <p>Values</p> <ul style="list-style-type: none"> Service Innovation Empowerment Quality Accountability |  <p>March 2016</p> |

NEWS

ACTIONS

FEATURES

PEOPLE

BACK TO
MAIN PAGE

Alaska Pacific University Considers Becoming a Tribal College



In January 2016 the Alaska Pacific University (APU) Board of Directors passed a resolution expressing interest in becoming a tribal college. An ad hoc committee to explore the option included Dr. Robert Onders, APU interim president and previous medical director at the Alaska Native Tribal Health Consortium (ANTHC). Exploratory work included site visits to Northwest Indian College and a feasibility and desirability study by the American Indian Higher Education Consortium.

Speaking to Commission members during the July

meeting, Dr. Onders discussed APU's strategic plan regarding the transition. In December 2016, the APU Board of Trustees made significant changes and placed new trustees to ensure the majority of the board held tribal membership. APU is now working on business operations and leveraging the partnership and subject matter expertise of ANTHC.

Dr. Onders said he did not anticipate any immediate major changes to or elimination of the university's programs of study. The focus of APU's five program areas will continue to be business,

liberal studies, outdoor studies, environmental science, and psychology. Any programmatic changes will be developed slowly to grow the necessary enrollment and to ensure financial stability.

In the future, the university could turn focus to education and healthcare, fields with substantial need in rural Alaska. Areas of interest include educational programs to expand Alaska's rural healthcare workforce, and in particular expanding options for Native students. ●

NEWS

ACTIONS

FEATURES

PEOPLE

BACK TO
MAIN PAGE

Outer Coast Project

VISION FOR A NEW LIBERAL ARTS COLLEGE IN SITKA



Once the home of Sheldon Jackson college, this Sitka landmark may be reactivated by the Outer Cost Project.

During a presentation at the July Commission meeting, Mr. Bryden Sweeney-Taylor and Alaska State Representative Jonathan Kreiss-Tomkins discussed a vision for a new college in Sitka, housed in a familiar building that was once home to the first institution of higher learning in Alaska.

Housed at the old Sheldon Jackson college campus, and modeled after Deep Springs College in California, Outer Coast intends to offer seminar courses in humanities, natural sciences, and social sciences. Graduates from postsecondary educational programs would earn associates degrees in liberal arts, and develop the purpose and tools to make an impact on the world.

The mission for Outer Coast will be to teach and inspire promising young people to create virtuous change in the world and in their own lives. A rigorous and challenging academic curriculum, emphasis on the value of labor and service, and entrustment of broad powers of student self-governance are central to the model. The college would aim to instill focus on the community, respect for the natural, and to foster creativity, curiosity, honesty, generosity, resilience, self-reliance, and good humor, while supporting students in their search for self-understanding and moral worth.

Sweeney-Taylor said Outer Coast plans to serve a diverse student body of national and international students from

Continued on Page 5



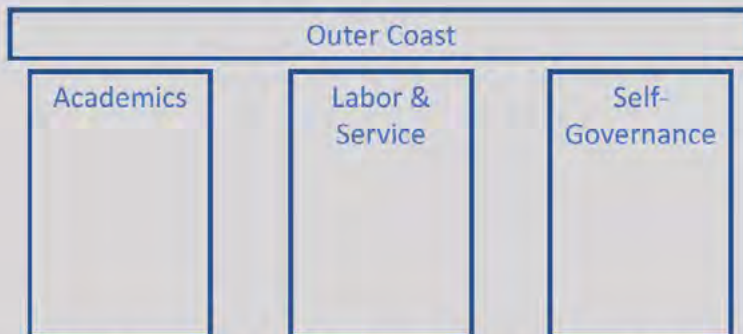
BACK TO
MAIN PAGE

broad race, gender, and socioeconomic backgrounds. The school would make a special effort to recruit rural and Native students as well as high-achieving students from other underserved backgrounds.

As a resident of Sitka, Representative Kreiss-Tomkins included commentary about the role of the Sheldon Jackson campus in the community. He also spoke about plans for revitalizing the campus during the school year and work with the organizations who currently utilize the campus. He said Outer Coast would combine private, philanthropic, public funding, and earned revenue from tuition to create an infrastructure for long-term sustainability. ●

Our Model

- The Outer Coast model is built on three pillars that make students accountable for nearly all aspects of their education.



- By entrusting students with a broad range of responsibilities, from running the campus to choosing their own curriculum to maintaining a meaningful engagement with the Sitka community, Outer Coast prepares them to make virtuous change in their own lives and the world.

.....
*To view the full report as
 it was presented to the
 Commission click here:
[View Outer Coast PDF](#)*

NEWS

ACTIONS

FEATURES

PEOPLE

BACK TO
MAIN PAGE

POLICY CORNER



BETTER TOGETHER: POLICIES THAT LINK CHILDREN'S SAVINGS ACCOUNTS WITH ACCESS INITIATIVES TO PAVE THE WAY TO COLLEGE

Policies providing access to Children Savings Accounts (CSAs) to help families save for college often fall short of targeting the low-income families they intend to support. The Institute for Higher Education Policy report highlights two strategies to improve participation in CSAs: 1) integrate CSAs with other college affordability programs, including scholarship and grant programs, and 2) link the accounts with other social services, such as housing access programs, to address short and long-term financial need. [Read More >](#)



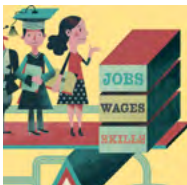
ECHOES OF RISING TUITION IN STUDENT'S BORROWING, EDUCATIONAL ATTAINMENT, AND HOMEOWNERSHIP IN POST-RECESSION AMERICA

A recent staff report by the Federal Reserve Bank of New York (Bleemer, et al. 2017) describes the impact of college tuition hikes in recent years on US young adults' finances. Their analysis finds that rising tuition accounts for about 30% of the increase in average student debt between 2003 and 2011, but does not appear to have meaningfully affected college enrollment and bachelor's degree attainment. This suggests that young adults bear the increasing costs of college by amassing debt rather than foregoing educational opportunities, and therefore that student loans have an important role in protecting young people from shocks to their education costs. [Read More >](#)



COMPETENCY-BASED EDUCATION, POLICY SNAPSHOT

National projections show that adult students' enrollment rates are growing faster than students' under the age of 25. States are experimenting with alternative learning programs such as competency-based education in part to meet adult student needs, including more flexible course offerings and financial aid. These programs support students working at their own pace to develop skills aligned with workforce needs, and are often lower-cost than more traditional college degrees. The competency-based education policy snapshot by the Education Commission of the States shows state efforts to pass legislation to support these alternative programs including links to legislation under consideration in California and Oregon. [Read More >](#)



CAREER PATHWAYS: FIVE WAYS TO CONNECT COLLEGE AND CAREERS

College is a big investment, and making a decision to go to college without access to important information about career pathways can be costly. The Georgetown University report emphasizes the importance of policy leadership to help students, families, and employers unpack the meaning of postsecondary credentials and their value in the workforce. They conclude that efforts to integrate education and workforce data and develop public-facing data tools will help states attract employers, improve school and career counseling, and result in better program alignment with market demand. [Read More >](#)

NEWS

ACTION

FEATURES

PEOPLE

BACK TO
MAIN PAGE

COMMISSION MEETING ROUNDUP

The Alaska Commission on Postsecondary Education held its quarterly meeting by video conference on July 25, 2017. The meeting was also available by audio conference. The agenda included:

- Institutional Standards and Evaluation action items:
 - Renewal of authorization of [Alaska Christian College](#) for three years through July 31, 2020.
 - Renewal of authorization of the [Alaska Institute of Oriental Medicine, Acupuncture and Massage Therapy](#) for one year through July 31, 2018.
 - Renewal of authorization for [Hair Science](#) for three years through July 31, 2020.
 - Renewal of authorization for [Thomas Edison State University](#) (Eielson Air Force Base) for five years through July 31, 2022.
 - Program amendment for [Shear Fire Academy of Hair Design](#) (Palmer) - Esthetics
- Presentation from Dr. Robert Onders, Interim President of Alaska Pacific University, on strategic plans for APU's consideration of becoming a tribal college (see page 3).
- Presentation from Bryden Sweeney-Taylor, Project Lead, and Alaska Representative Jonathan Kreiss-Tomkins, Founder and Board Chair of the Outer Coast project, on plans to create the Outer Coast College using the Sheldon Jackson campus in Sitka (see page 4) or [click here to view the pdf](#).
- Management team updates

The next meeting is scheduled in Anchorage on October 24, 2017

CORPORATION MEETING ROUNDUP

The Alaska Student Loan Corporation did not meet this quarter.

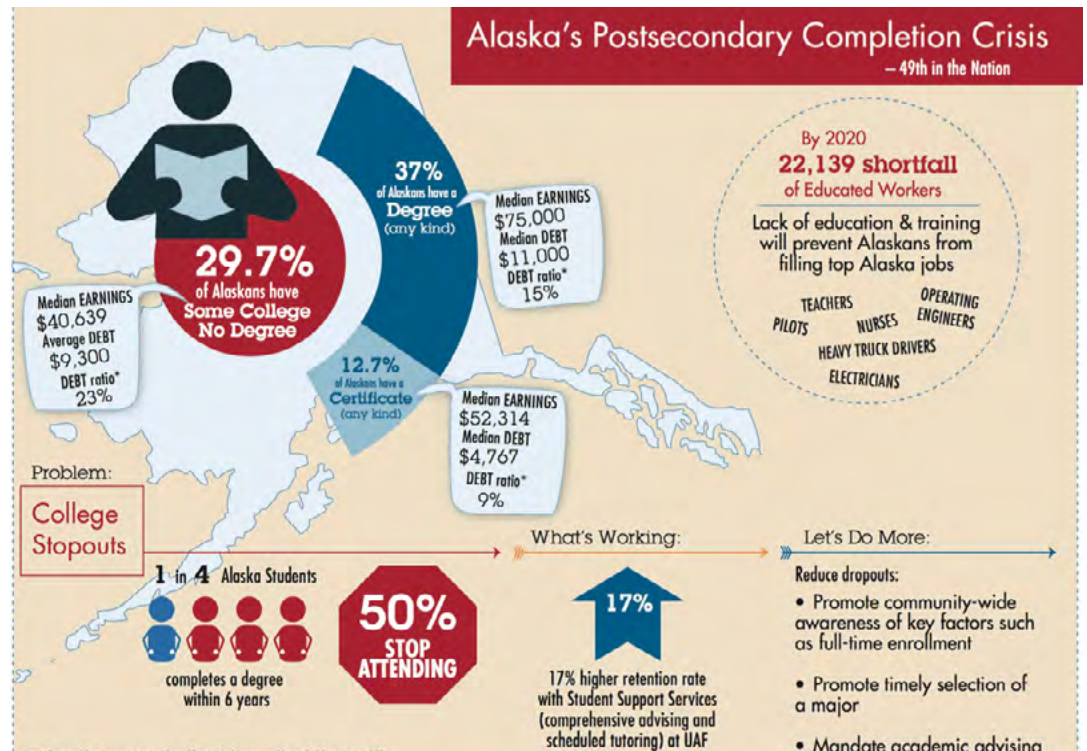
The next meeting is scheduled via teleconference on November 1, 2017.



BACK TO MAIN PAGE

The Network:

WHAT IT IS, WHY IT IS NEEDED, AND WHAT IT IS TRYING TO ACCOMPLISH



Compiling information about what is happening in Alaska is the first step to being able to solve the education completion crisis.

[The Alaska Postsecondary Access and Completion Network](#) (also known as the “Network”) was formed in 2014 in an effort to foster a culture of postsecondary participation and success in Alaska. Originally founded at ACPE through a federal grant, the Network was designed to spin off as an independent non-profit upon the end of grant funding – a goal successfully accomplished in 2016. ACPE remains an engaged partner through membership on the Board of Directors.

The Network’s mission is to build and strengthen partnerships to increase in the percentage of all Alaskans who complete postsecondary education, particularly credentials relevant to a robust Alaskan economy, to 65% by 2025.

Why is this needed?

According to Georgetown University researchers, by 2020, 66% of Alaskan jobs will require some type of postsecondary education. There are a number of other

Continued on Page 9

Learn more about the Network by visiting 65by2025.org

NEWS

ACTIONS

FEATURES

PEOPLE

BACK TO
MAIN PAGE

methodologies that produce a range of forecasts, however all agree on one finding, including Alaska's Department of Labor & Workforce Development: Alaska is headed for a shortage of workers with postsecondary education in our high-demand, high-paying industries. We are also already facing an inadequate supply of industry certifications in the skilled trades.

Despite the growing need for postsecondary training or credentials beyond a high school diploma or GED, Alaska is lagging behind in production of credentialed workers.

Who makes up the Network?

Collective impact is required to address this complex issue. The Alaska Postsecondary Access and Completion Network brings together secondary educators and administrators, postsecondary representations from training providers to universities, business, non-profit, Alaska Native organizations, government, and the community at large to better understand the core challenges that Alaskans face, and empower individual organizations and service providers to help reach an ambitious goal.

The Network is led by an elected, 13-member Board of Directors. The Board of Directors is structured to represent key constituencies and stakeholder groups.

What approach will the Network use to accomplish its goal?

The Network is focused on empowering Alaskans to become part of the 65% by 2025 solution. Work focuses on increasing alignment and communication, research dissemination, professional development, and public messaging in support of increased educational attainment across the state.

Through a recent grant provided by the Lumina Foundation, the Network is now able to begin a region-based approach to develop action plans specific to each of Alaska's six economic regions, each of which faces their own unique challenges.

Through March 2018, the Network will work on this project in the Southeast and Interior regions. The focus for the action plan will be to build a regional infrastructure to advance the statewide attainment goal of 65% by 2025, through engagement of a robust team of partners; development of a common voice; and design of effective means to share best practices and strategies.

Initial Alaska Workforce Education and Training Conferences in these regions were held in August 2017, with 65 attendees at the Southeast conference and 60 attendees at the Interior conference. Attendees of both conferences engaged actively with strong contributions concerning existing strengths, barriers, and priorities. Next steps will include the development of steering committees to guide regional action plan development. ●



OUR GOAL: 65% of Alaskan adults have a credential by 2025

NEWS

ACTIONS

FEATURES

PEOPLE

BACK TO
MAIN PAGE

IN THE LAST QUARTER, ACPE WELCOMED THE FOLLOWING NEW STAFF.



Gretchen Becker
Research Analyst

Develops and presents research and analysis related to education and workforce development program outcomes, and to inform ACPE's policy goals and strategic planning.



Amanda Sanders
Executive Administrative Assistant

Provides administrative support to the Executive Office and the entire agency, and acts as staff assistant to the Executive Director and the Human Resources Administrative Officer.



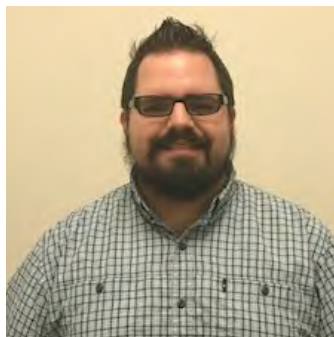
Michelle Norman
Quality Assurance Officer

Leads the agency's Quality Assurance team, including developing and deploying annual Lean implementation and training plans, acting as agency privacy officer, managing the agency business recovery plan, and performing compliance analyses.

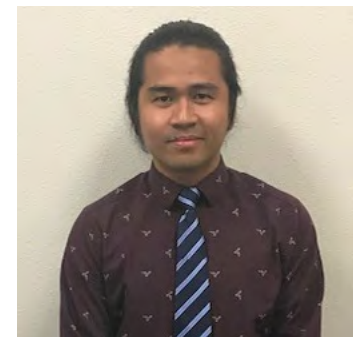


Jillian Sollars
Customer Service Specialist

Located in the Program Operations Division under direct supervision of the Customer Service Supervisor, these positions respond to incoming telephone calls, staff outbound call campaigns, draft correspondence and email, and assist walk-in customers.



Kordel Thompson
Customer Service Specialist



Rod Cunan
Receptionist

Functions as the agency's primary front desk receptionist, welcomes and assists walk-in customers, and provides clerical and functional support to the Financial Aid Servicing Team and other units.



Alaska Student Loan Corporation

[BACK TO MAIN PAGE](#)

ACPE UPDATE | Autumn 2017

Alaska Commission on Postsecondary Education Alaska Student Loan Corporation

UPDATE

COLLEGE & CAREER PLANNING • FINANCIAL AID • CONSUMER PROTECTION
Promoting Higher Education & Training for Alaska

EDITOR

Christina Campbell
Marketing Specialist

LAYOUT/DESIGN

Gretchen Weiss
Publication Specialist

CONTRIBUTING STAFF

Gretchen Becker
Research Analyst

Margaret Buck
Executive Secretary

Stephanie Butler
Executive Director

Kierke Kussart
IA Program Coordinator

Rebekah Matrosova
Director of Outreach

Barbara Mongar
Community Partnership Manager

Amanda Sanders
Administrative Assistant

Commission Meetings

Tuesdays: October 24, 2017 | January 9, 2018 | April 3, 2018 | July 24, 2018

The Alaska Commission on Postsecondary Education, funded by the Alaska Student Loan Corporation, promotes access to and success in education and career training beyond high school. The commission provides:

- programs creating early awareness of the importance of preparing for higher education success
- education planning tools and resources
- advocacy and support for postsecondary participation in Alaska
- financial aid for college and career training
- education consumer protection through institutional authorization and complaint investigation

ASLC Mission:

Operate as an enterprise agency of the State of Alaska to finance the Alaska Student Loan Program.

ACPE.alaska.gov

PO Box 110505 Juneau, Alaska 99811-0505 | Executive Offices: (907) 465-6740 | Customer Call Center: (800) 441-2962

While primarily distributed electronically, *ACPE Update* is available in paper format upon request.

Auxiliary aids and services available upon request to individuals with disabilities.