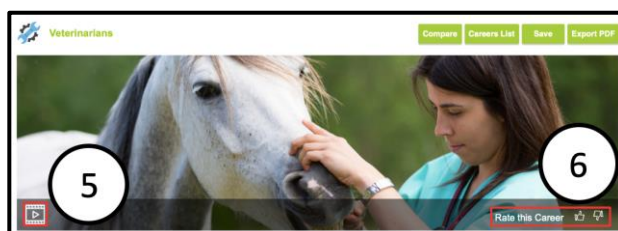
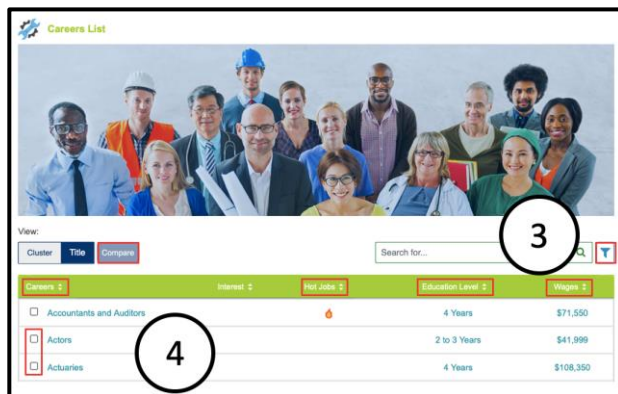
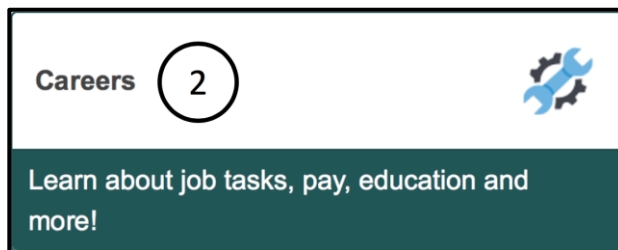
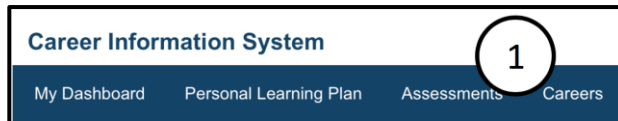


There is a lot to consider when thinking about your future career. Explore different careers. Learn what people do, how much they earn, and how to prepare for a career. The more you know, the better career decisions you will make!



Instructions

1. Login to AKCIS 360 and select the **Careers** tab at the top of the screen.
2. Select **Careers**.
3. Explore the **Careers List**. You can view the list by **Title** or **Cluster**. Sort the list by **Title**, **Hot Jobs**, **Education Level**, or **Wages**. You can also narrow your list by using the filter.
4. Select a career **Title** or **Cluster** to view more information about careers. Compare careers by checking the box next to two careers and selecting **Compare** above the list.
5. Select the **play** button to watch a video to learn more about the career.
6. Rate this career with a **thumbs up** or a **thumbs down**. This marks your interest in the career, which can be used later to sort the **Careers List**.

7. At a Glance

Learn some general information about the career you selected. To view more information about your career's **Career Cluster**, select the **Career Clusters** box on this page.

8. You may view pages with more information by selecting the boxes on this page or by selecting the tabs at the top of the screen.

Location	Entry Wage	Median Wage	Experienced Wage
United States	\$75,580	\$95,460	\$122,590

9. Job Description

Select each drop down menu to view more information about job criteria.

10. Wages

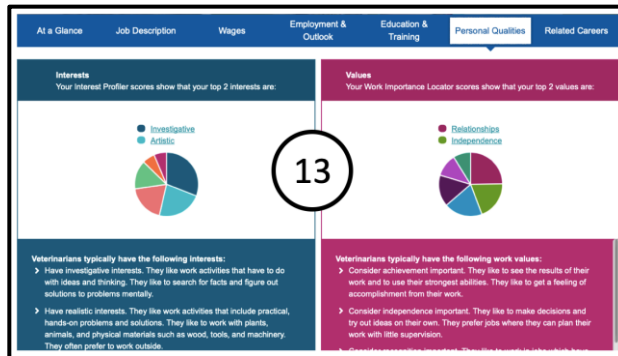
View the career's wage information by using the tabs **Annual**, **Monthly**, and **Hourly**. Select the button **Select States** to view wage information for other states.

11. Employment & Outlook

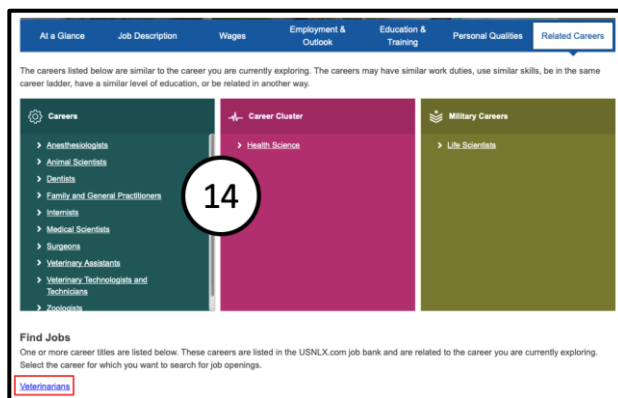
Use the **Select States** button to view employment and outlook information for other states.



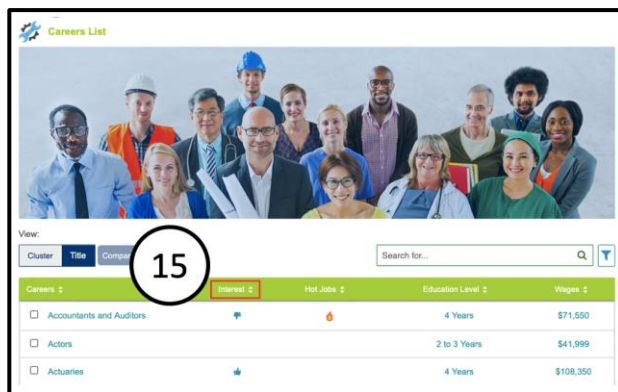
12. **Education & Training**
Select each drop down menu to view more information about education requirements.



13. **Personal Qualities**
Learn about the **Personal Qualities** that match this career. If you have taken the **Work Importance Locator** or the **Interest Profiler** assessments, your scores will be displayed. A list of **Interests** and **Values** that are typical for the career will show beneath your scores.



14. **Related Careers**
Use these links to read more information about careers or career cluster that are related to this career. Select the link at the bottom of the page to view job listings for that career.



15. After exploring the **Careers List** and rating careers you like or dislike, you can sort the **Careers List** by your **Interest**.